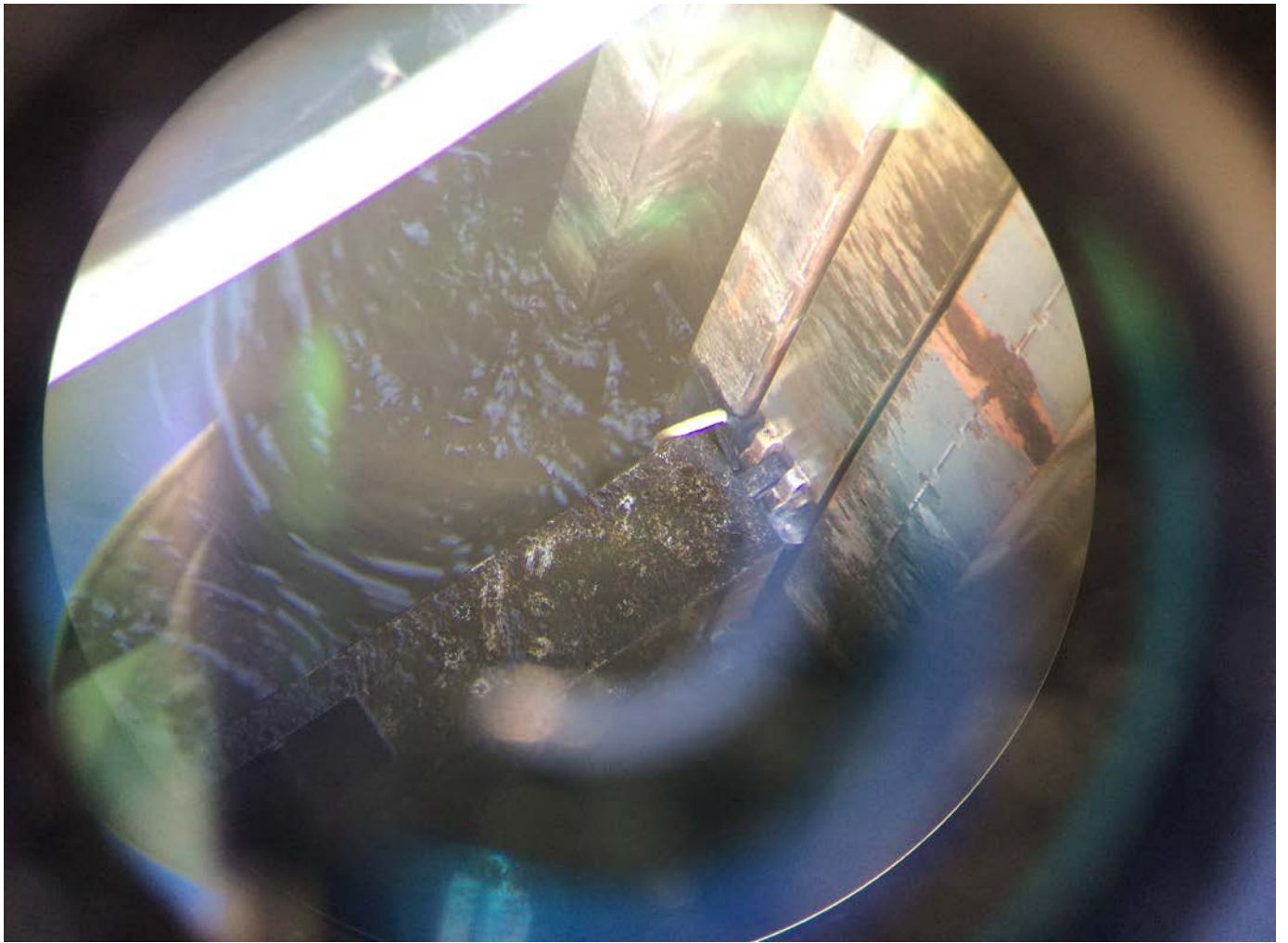


MEMORANDUM FOR THE RECORD

SUBJECT: 16TDA06 Lamprey mortalities at E2 & E3 weirs- East adult fish ladder entrance

On 3 August, Fisheries technician conducting grating inspection via ROV raised entrance weirs above tailwater. Adult lamprey mortalities were observed pinched between weir and guide. E3 appears to have 2 new, 1 old mort, E2 had 1 old mort.

- A. Species – Pacific Lamprey (*Entosphenus tridentatus*).
- B. Origin – Unknown.
- C. Length – Unknown.
- D. Marks and tags – No marks and/or tags.
- E. Marks and Injuries found on carcass – See photo
- F. Cause and Time of Death – Fresh and old mortalities
- G. Future and Preventative Measures – Investigate potential modifications to exclude lamprey from weir guides. Possible implementation during in water work period. Will consult lamprey minor modification Product Development Team. Recommending including with future weir cap project for lamprey passage improvements, expected in 2017.



E2



E3